

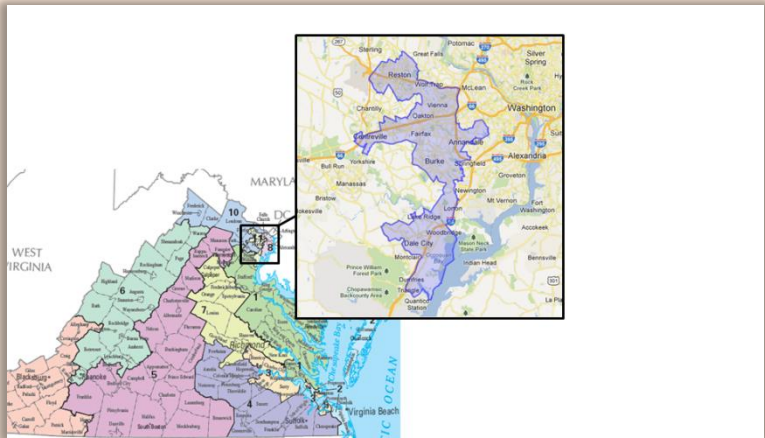
Welcome!



**A Guide for Constituents
of Congressman Gerry
Connolly**

2238 Rayburn HOB
Washington, D.C. 20515

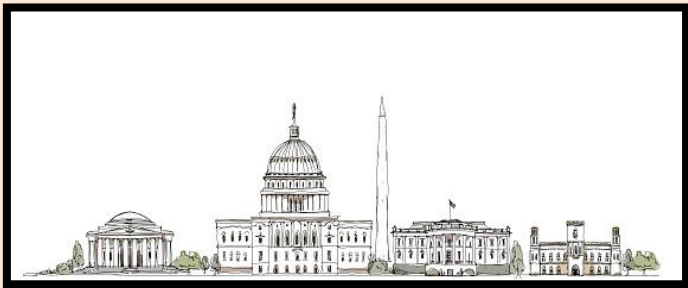
The 11th Congressional District



Congressman Connolly represents the 11th Congressional District of Virginia in the U.S. House of Representatives. It encompasses the City of Fairfax, most of Fairfax County, and most of Prince William County. There are many great things about the 11th district, but one of the best aspects is that you are so close to the Nation's Capital, giving you the ability to explore D.C. better than nearly anyone else in the country!

Tour Information

Time to go out and explore! We have compiled all relevant tour information for your convenience.



The White House



- Must submit a Tour Request Form through [Congressman Connolly's website](#)
- Requests cannot be made earlier than 21 days and no later than 3 months in advance
- No tours on Sunday or Monday
- May request a tour for up to 100 guests
- Tickets are very limited, and unfortunately, our office has no control over which requests get denied or approved
- Nearest metro stop: McPherson Square on Blue, Orange, and Silver lines

The Capitol

- You can reserve a tour of the Capitol by filling out a Tour Request Form on [Congressman Connolly's website](#)
- Tours are not given on Sunday's, and you cannot request a tour more than 5 months in advance
- General admission tickets are also handed out at 8:00am on a first come first serve basis, and tours are conducted between 9:00am and 3:30pm
- Tip: many people do not show up for their reservations, so you may get lucky and score tickets if you did not reserve them in advance
- Nearest metro stop: Capitol South on Orange and Silver lines



Bureau of Engraving and Printing

- Must submit a Tour Request Form through [Congressman Connolly's website](#)
- Tours are given between 9:00am – 2:00pm
- Requests cannot be made more than 5 months in advance
- No more than 10 people per requested tour
- Closed on weekends, federal holidays, and the week between Christmas and New Years
- **Admission is free and no tickets are required between August 29, 2016 and March 16, 2017**
- Nearest metro stop: Smithsonian on Blue and Orange lines



Supreme Court

- Building hours:
Monday – Friday
(except Federal
Holidays)
9:00am – 4:30pm
- Does not offer guided
tours, but visitors are
encouraged to tour the
building on their own and take advantage of a variety
of free programs
- Courtroom Lectures: 30-minute programs that
introduce visitors of all ages to judicial functions of
the Supreme Court and its history
- Courtroom Sessions: all oral arguments are open to
the public, but seating is limited and on a first-come,
first-seated basis (there are two lines: one to hear the
entire argument and another to sit in only for 3
minutes)
- Nearest metro stops: Capitol South on Blue, Orange,
and Silver lines; Union Station on Red Line
- <https://www.supremecourt.gov/visiting/touringthebuilding.aspx>



FBI Education Center



- **Tours are closed until February 2017**
- Nearest metro stops: Federal Triangle on Blue and Orange lines; Gallery Place/Chinatown and Metro Center
- <https://www.fbi.gov/contact-us/fbi-headquarters/fbi-education-center>

Pentagon

- Tours available Monday – Friday from 9:00am – 3:00pm, and last about one hour
- Must be booked from 14 to 90 days in advance
- Nearest metro stop: Pentagon on Blue and Yellow lines
- <https://pentagontours.osd.mil/Tours/tour-guidelines.jsp>

Library of Congress

- Entrance to the Thomas Jefferson Building is free and open Monday – Saturday, 8:30am – 5:00pm; all buildings are closed on Sundays, Thanksgiving Day, Christmas and New Year’s Holidays
- Nearest metro stop: Capitol South on Orange, Blue, and Silver lines
- <https://www.loc.gov/visit/>

National Archives



- Displays the Constitution, Bill of Rights, and Declaration of Independence
- Open 7 days a week (except Thanksgiving Day and Christmas Day) from 10:00am – 5:30pm; last admission is 30 minutes prior to closing
- Nearest metro stop: Archives-Navy Memorial-Penn Quarter on Green and Yellow lines
- <https://www.archives.gov/museum/visit/>

Kennedy Center

- Open Monday – Saturday at 10:00am and Sundays and Holidays at 12:00pm
- Guided tours occur 10:00am – 5:00pm on weekdays and 10:00am – 1:00pm on weekends
- Nearest metro stop: Foggy Bottom/GWU on Orange, Blue, and Silver lines
- <http://www.kennedy-center.org/pages/visitor>

National Cathedral

- Open Monday – Saturday 10:00am – 5:30pm, Sunday 1:00pm – 4:00pm
- Nearest metro stop: Tenleytown on Red line; drive or take Metrobus
- <http://cathedral.org/visit-us/>



Smithsonians – all free!

- **National Air and Space Museum** (10:00am – 5:30pm, open every day except Christmas Day)
 - Closest metro stop: L'Enfant Plaza
 - <https://airandspace.si.edu/node/73198>
- **National Museum of African Art** (10:00am – 5:30pm, open every day except Christmas Day)
 - Closest metro stop: Smithsonian
 - <https://africa.si.edu/about/>
- **National Museum of African American History and Culture**
 - Advanced Timed Passes through March 2017 are no longer available; a limited number of free Timed Passes can be obtained in person at the museum on the same day of your visit (passed out on first-come, first-served basis starting at 9:15am)
 - Closest metro stop: Federal Triangle
 - <https://nmaahc.si.edu/top-10-things-grand-opening>
- **National Museum of American History** (10:00am – 5:30pm, open every day except Christmas Day; sometimes have extended hours)
 - Closest metro stops: Federal Triangle and Smithsonian
 - <http://americanhistory.si.edu/visit>

- **National Museum of Natural History** (10:00am – 5:30pm, open every day except Christmas Day; sometimes have extended hours)
 - Ticketed programs: Live Butterfly Pavilion, Johnson IMAX Theater
 - Closest metro stop: Smithsonian
 - <http://naturalhistory.si.edu/visit/>
- **National Postal Museum** (10:00am – 5:30pm, open every day except Christmas Day)
 - Closest metro stop: Union Station
 - <http://postalmuseum.si.edu/visit/index.html>
- **National Portrait Gallery** (11:30am – 7:00pm, open every day except Christmas Day)
 - Closest metro stops: Metro Center and Judiciary Square
 - <http://npg.si.edu/visit>



- **National Museum of the American Indian** (10:00am – 5:30pm, open every day except Christmas Day)
 - Closest metro stop: L'Enfant Plaza
 - <http://www.nmai.si.edu/visit/washington/>

- **National Zoological Park** (8:00am – 7:00pm, last admittance one hour before closing, open every day except Christmas Day)
 - 5:00pm closing in winter (October 1st – March 14th)
 - Exhibit buildings and visitor center: 9:00am – 6:00pm (4:00pm closing in winter)
 - Dining and shopping: 9:00am – 5:00pm (4:00pm closing in winter)
 - Closest metro stop: Woodley Park-Zoo
 - <https://nationalzoo.si.edu/visit>

- **Hirshhorn Museum and Sculpture Garden** (10:00am – 5:30pm, open every day except Christmas Day)
 - Plaza: 7:30am – 5:30pm
 - Garden: 7:30am – dusk
 - Closest metro stop: L'Enfant Plaza
 - <http://hirshhorn.si.edu/collection/home/#collection=visit>

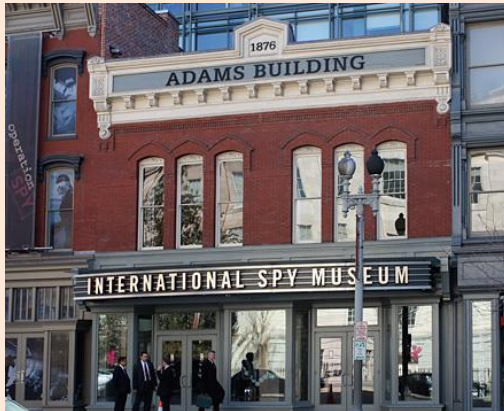


Other Museums



- **Newseum** (9:00am – 5:00pm, open daily except Thanksgiving, Christmas Day, New Year's Day)
 - Tickets range from \$13.95 – \$22.95, children 6 and younger get in free
 - Closest metro stops: Archives-Navy Memorial-Penn Quarter and Judiciary Square
 - <http://www.newseum.org/visit/>
- **Holocaust Museum** (10:00am – 5:20pm, open daily except Yom Kippur and Christmas Day)
 - Admission is free, but tickets must be reserved either online (\$1 transaction fee) or in person
 - Closest metro stop: Smithsonian
 - <https://www.ushmm.org/information/visit-the-museum/plan-your-visit>

Other Museums



- **Spy Museum** (hours vary)
 - Tickets range from \$14.95 - \$21.95
 - Closest metro stop: Gallery Place/Chinatown
 - <https://www.spymuseum.org/visit/>
- **Drug Enforcement Agency Museum** (10:00am – 4:00pm, open daily except Federal Holidays)
 - Closest metro stop: Pentagon City
 - <https://deamuseum.org/visitor-information/>
- **Daughters of the American Revolution Museum** (8:30am – 4:00pm Monday – Friday, 9:00am – 5:00pm Saturday)
 - Closest metro stops: Farragut West and Farragut North
 - <http://www.dar.org/national-society/visitor-information/plan-your-visit>

Monuments (open 24 hours unless otherwise noted)

- **Lincoln Memorial** (closest metro stops: Foggy Bottom and Smithsonian)
 - <https://www.nps.gov/linc/planyourvisit/index.htm>
- **Washington Monument** (9:00am – 5:00pm, open daily except July 4th and Christmas Day) (closest metro stop: Smithsonian)
 - Same day pick-up tickets are free and distribution starts at 8:30am; you must have a ticket to enter the monument
 - <https://www.nps.gov/wamo/planyourvisit/basicinfo.htm>
- **Jefferson Memorial** (closest metro stop: Smithsonian)
 - <https://www.nps.gov/thje/planyourvisit/basicinfo.htm>



- **Martin Luther King, Jr. Memorial** (closest metro stop: Smithsonian)
 - <https://www.nps.gov/mlkm/planyourvisit/basicinfo.htm>

- **Korean War Veterans Memorial** (closest metro stop: Smithsonian)
 - <https://www.nps.gov/kowa/planyourvisit/basicinfo.htm>
- **Vietnam Veterans Memorial** (closest metro stop: Foggy Bottom)
 - <https://www.nps.gov/vive/planyourvisit/basicinfo.htm>
- **WWII Memorial** (closest metro stop: Smithsonian)
 - <https://www.nps.gov/wwii/planyourvisit/basicinfo.htm>
- **US Navy Memorial** (closest metro stop: Archives-Navy Memorial-Penn Quarter)
 - <https://www.navy Memorial.org/about/location>
- **FDR Memorial** (closest metro stop: Smithsonian)
 - <https://www.nps.gov/frde/planyourvisit/basicinfo.htm>



Other Attractions



- **Arlington National Cemetery**
 - Closest metro stop: Arlington Cemetery
 - <http://www.arlingtoncemetery.mil/Visit>

- **US Botanic Gardens**
 - Closest metro stop: Federal Center SW
 - <https://www.usbg.gov/visit>